

NATURAL GAS FIRED CHP PB 500SNG

SPECIFICATION DATASHEET

Operation:	Mains parallel Synchronous
Fuel:	Natural gas
Electrical power modulation:	250-500 kW(e)
Thermal output:	521 kW(t)
Electrical efficiency:	39.1%
Flow temperature max:	95 ° C
Return temperature max:	80 ° C
Exhaust temperature:	120 ° -150 ° C
Exhaust gas flow:	2950 kg/hr
Exhaust emission at:	CO <1000 mg/Nm ³
Efficiency:	79.2%
Voltage:	400 V
Power Factor:	cos phi 0.98
Sound Power Level:	<80 dBA (at 1 metre)
Fuel Consumption:	134.8 m ³ /hr or 1286 kW



image for illustration purposes only

Engine

Model:	Perkins
Type:	4008-30TRS2

Alternator

Voltage:	400 V
Frequency:	50 Hz
Speed:	1550 rpm

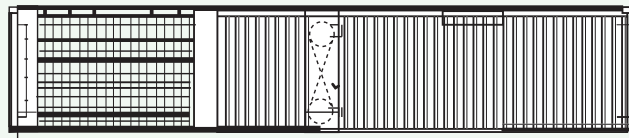
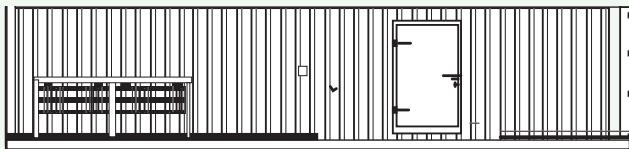
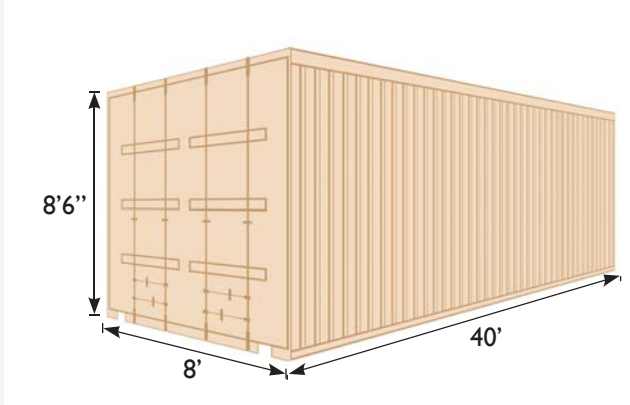
CHP Dimensions OPEN (Canopy)

Length	5700	(7800) mm
Width	1900	(2900) mm
Height	2900	(4000) mm
Weight	10200	kg
Heating flow	R 4	inch
Heating return	R 4	inch
Exhaust port	R 6	inch
Gas connection	R 3	inch

NATURAL GAS FIRED CHP PB 500SNG

PROJECT SPECIFIC PACKAGING AVAILABLE

PB500 - 1000 CONTAINER OPTIONS - AVAILABLE UPON REQUEST



CONTROL CABINET

CONSTRUCTION

- Mounted on CH, made of sheet steel 1.5 mm,

FEATURES

- Automatic start/stop
- Full system monitoring
- Fault monitoring and fault indication in plain text
- Automatic Power control and modulation
- Lambda control optional
- Timer function to optimise the operating hours

MOTOR / GENERATOR PROTECTION

- Overload monitoring
- Reverse power monitoring
- Inlet temperature monitoring
- Flow temperature control
- Oil pressure
- Motor temperature monitoring
- Exhaust temperature monitoring
- Gas Monitoring
- Leakage monitoring
- Generator Temperature Monitoring

METERING

- Electric meters (kWh)
- Hour meter
- Start counter

RECORDING

- Logbook history
- Fault memory

CONTROL

- Main switch with Emergency Stop Function
- Easy access keypad on control panel
- Full remote access and control via modem or broadband
- Fault notification via email
- Interface to BMS via Ethernet UDP, Mod-bus RTU, RK512, 3964R
- Ability to control back up boilers

CONTROL OUTPUTS

- Gas valve signal
- External fault signal

CONTROL INPUTS

- External run request
- Boiler room emergency switch signal
- External power requirement

NETWORK PROTECTION FUNCTIONS

- G59 Relay, monitoring voltage, frequency and rate of change of frequency (RoCoF)

PROTECTION

- Short-circuit protection
- G59 Electrical Protection Relay
- Performance Monitoring of CHP system
- Current monitoring of CHP and Electrical Network

SWITCHING TO THE GRID

- Unit has independent starter motor
- Black Start and Island Mode options available

According to our business policy and the continuing development of our products, we reserve the right to change specifications and features without notice.