

NATURAL GAS FIRED CHP PB 1000SNG

SPECIFICATION DATASHEET

Operation:	Mains parallel Synchronous
Fuel:	Natural gas
Electrical power modulation:	500-1000 kW(e)
Thermal output:	1079 kW(t)
Electrical efficiency:	39.2%
Flow temperature max:	95 ° C
Return temperature max:	80 ° C
Exhaust temperature:	120 ° -150 ° C
Exhaust gas flow:	5760 kg/hr
Exhaust emission at:	CO <1000 mg/Nm ³
Efficiency:	80.8%
Voltage:	400 V
Power Factor:	cos phi 0.98
Sound Power Level:	<80 dBA (at 1 metre)
Fuel Consumption:	268 m ³ /hr or 2572 kW



image for illustration purposes only

Engine

Model:	Perkins
Type:	4016-61TRS2

Alternator

Voltage:	400 V
Frequency:	50 Hz
Speed:	1550 rpm

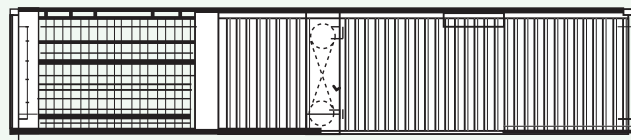
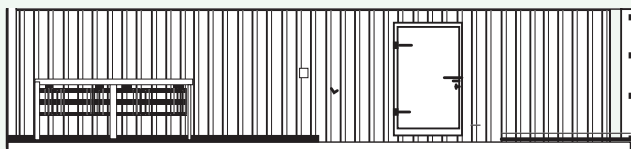
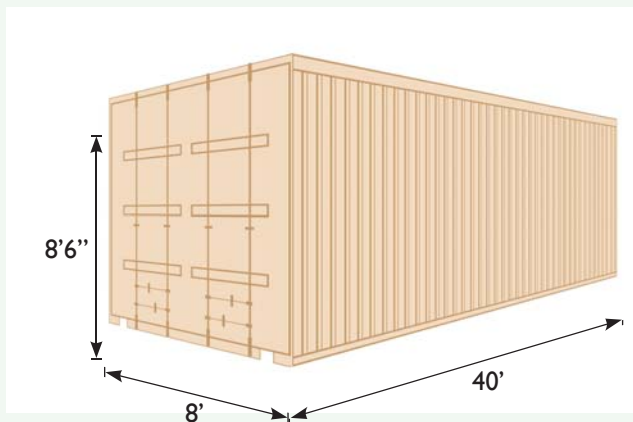
CHP Dimensions OPEN (Container)

Length	6500	(12192) mm
Width	2200	(2438) mm
Height	2591	(3400) mm
Weight	14500	kg

NATURAL GAS FIRED CHP PB 1000SNG

PROJECT SPECIFIC PACKAGING AVAILABLE

PB500 - 1000 CONTAINER OPTIONS - AVAILABLE UPON REQUEST



CONTROL CABINET

CONSTRUCTION

- Mounted on CH, made of sheet steel 1.5 mm,

FEATURES

- Automatic start/stop
- Full system monitoring
- Fault monitoring and fault indication in plain text
- Automatic Power control and modulation
- Lambda control optional
- Timer function to optimise the operating hours

MOTOR / GENERATOR PROTECTION

- Overload monitoring
- Reverse power monitoring
- Inlet temperature monitoring
- Flow temperature control
- Oil pressure
- Motor temperature monitoring
- Exhaust temperature monitoring
- Gas Monitoring
- Leakage monitoring
- Generator Temperature Monitoring

METERING

- Electric meters (kWh)
- Hour meter
- Start counter

RECORDING

- Logbook history
- Fault memory

CONTROL

- Main switch with Emergency Stop Function
- Easy access keypad on control panel
- Full remote access and control via modem or broadband
- Fault notification via email
- Interface to BMS via Ethernet UDP, Mod-bus RTU, RK512, 3964R
- Ability to control back up boilers

CONTROL OUTPUTS

- Gas valve signal
- External fault signal

CONTROL INPUTS

- External run request
- Boiler room emergency switch signal
- External power requirement

NETWORK PROTECTION FUNCTIONS

- G59 Relay, monitoring voltage, frequency and rate of change of frequency (RoCoF)

PROTECTION

- Short-circuit protection
- G59 Electrical Protection Relay
- Performance Monitoring of CHP system
- Current monitoring of CHP and Electrical Network

SWITCHING TO THE GRID

- Unit has independent starter motor
- Black Start and Island Mode options available

According to our business policy and the continuing development of our products, we reserve the right to change specifications and features without notice.